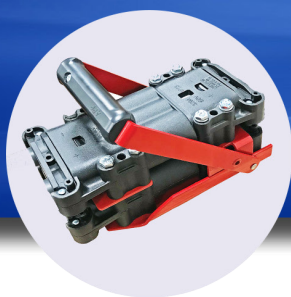
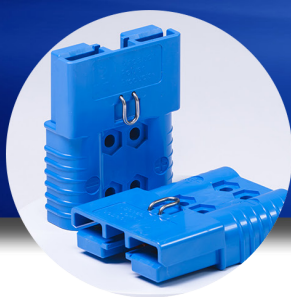




ANDERSONPOWER™



Construction & Agriculture Connectivity Solutions



Innovator in Power Connections Since the 1953 Invention of Flat Wiping Technology

Search our offerings for options that include:

- Current Ratings Up to 800 Amps
- 600 Voltage Rating AC/DC
- Flame Resistant Materials
- Sealed Ingress Protection Ratings
- Up to 10,000 Mating Cycles
- Touch Safe Design Features
- Contact Us For Custom Connector Solutions

New Product Series Spotlight



- Current Ratings Up to 140 Amps
- IP68 Rated
- Up to 8 Signals
- Latching Protection
- Supports CARB Requirements
- Ergonomic Design

www.andersonpower.com

Why Choose Anderson Power For Your Best Connection

Cycles

•We offer more mating cycles than our competitors

In-house Testing

•We have in-house UL & TUV labs to get testing done

Integration

•We are more vertically integrated than the competition

Global Capabilities

•We have global manufacturing capabilities

	Current Amp Range	Voltage Rating AC/DC	Mating Cycles	Operating Temp. Chemical Resistant Temp.	Housing Style	Power Contacts Auxiliary Contacts	Hot Plug	Ground	Touch Safe	Flame Resistance	Mechanically Keyed	Sealed Options	IP Rating
SB® Series													
	Up to 500	600	10,000	-20° to 105° C	•Wire •Busbar	2 to 3	✓		✓	✓	✓		IP20 IP64 IP10 unmated
				-40° to 105° C									
SBE® / SBX® Series													
	Up to 550	600	10,000	-20° to 105° C SBX	•Wire	2	✓		✓	✓	✓		IP20
				-40° to 105° C SBE		8							
SBE® Double Stack													
	Up to 700	600	10,000	-40° to 105° C SBE	•Wire	4	✓		✓	✓	✓		IP20
						16							
SBS® Series													
	Up to 110	600	1,500 to 10,000	-20° to 105° C	•PCB •Wire	2 to 3	✓	✓	✓	✓	✓		IP20 IP10
				-40° to 105° C		4							
SBS®X Series													
	Up to 140	600	5,000	-20° to 105° C	•Wire •Panel Mount	Up to 3	✓	✓	✓	✓	✓	✓	IP68
						Up to 8							
SPEC Pak®													
	Up to 80	600	1,500	-40° to 105° C	•Wire	Up to 5	✓		✓	✓	✓	✓	IP68
						Up to 8							
DIN E Series - Euro Battery Connector													
	Up to 400	600	5,000	-25° to 75° C	•Wire	2	✓		✓	✓	✓		IP23
						4							
DIN A Series - Battery Connector													
	Up to 450	600	5,000	-25° to 75° C	•Wire	2			✓	✓	✓		IP23
						4							
DIN Double Stack													
	(E) Up to 800 (A) Up to 650	600	5,000	-25° to 75° C	•Wire	4			✓	✓	✓		IP23
						8							



Anderson Power Products
13 Pratts Junction Road
Sterling, MA 01564
978.422.3800
www.andersonpower.com



JPCPT
675 Sycamore Dr.
Milpitas, CA 95035
408.526.9363
sales@jpc-pt.com
www.jpc-pt.com

All Data Subject to Change Without Notice

©2023 Anderson Power Products Inc., all rights reserved. Anderson Power Products®, SB®, SBS®, SBE®, SPEC Pak® SBX® and the Anderson Power Logo are registered trademarks of Anderson Power Products, Inc.