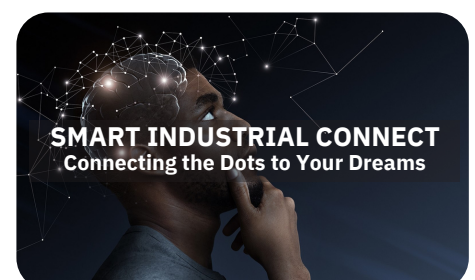
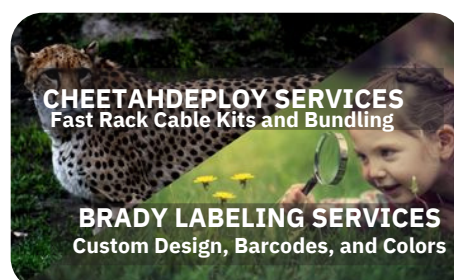
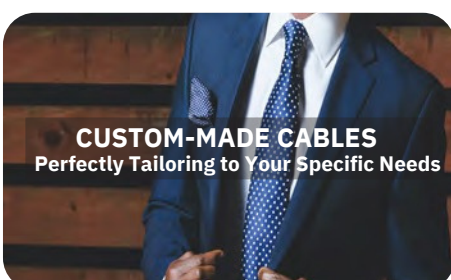
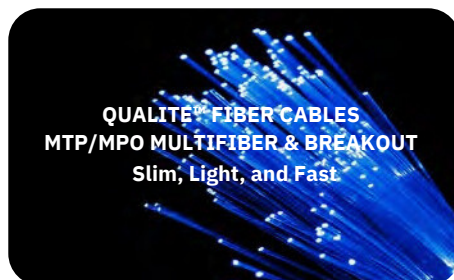
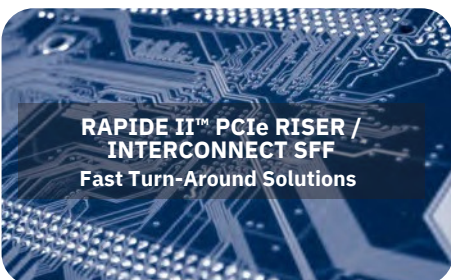
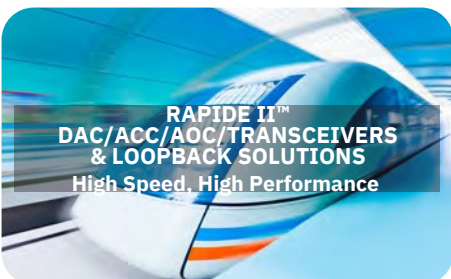
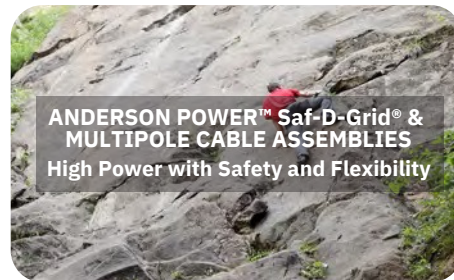


# JPCPT

JPCPT is a leading provider of high-quality connectivity solutions based in Silicon Valley. Our mission is to provide our customers a total satisfaction with their custom cables needs through innovative engineering, quality manufacturing, and handling efficiency. We support a wide variety of customers in the areas of Government, Telecommunications, Manufacturing, Retail, Health Care, High-tech, and any businesses that have data centers or provide cloud-service. With customers across the US, Canada, Europe, and Asia, we are proud to have our products used by people all around the world.

## What We Do



## FlexLite™ Series CAT8/6a/6/5e UTP FUTP UFTP SFTP LSZH/Soft PVC/ Thin 32/28/26/24AWG



- FlexPremium
- FlexRibbon™
- FlexMini™
- FlexArch™
- SuperFlat
- Port Cassette to Plug Modules
- Port Cassette to Port Cassette
- Low Bend Radius
- Smallest plug + boot
- 0.3FT and up

## Anderson Power™



- Saf-D-Grid® to C14
- Saf-D-Grid® to C20
- Saf-D-Grid® 277V Double End
- Saf-D-Grid® Single End
- Saf-D-Grid® Receptacles
- Powerpole® & Multipole Cable Assemblies
- 2006G Ultra Short EMI Shield Receptacle
- Receptacle 2007G Ultra Short
- SBS®X-75 Cable Assemblies

## Supra Power Cords™



- SSEMCO Locking Power Cords
- Data Center Power Cords
- North American Power Cords
- International Power Cords
- Y Splitter Power Cords
- Hospital-Grade N. American Power Cords
- Red/Black Soft DC Zip Cord
- Power Cord Adapters
- HPE Power Cords LS-26 to LS-25

## Qualite™ Fiber Optic Solutions



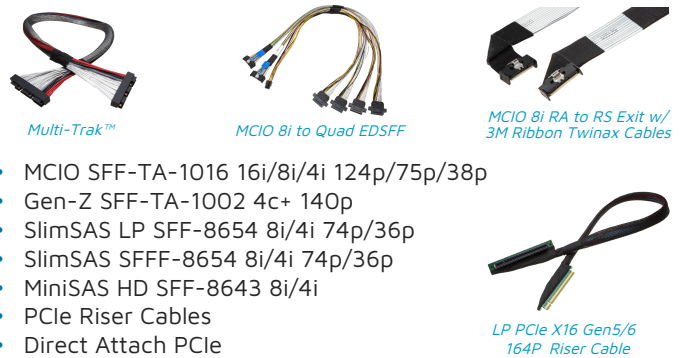
- Multifiber Breakout
- Multifiber
- Fiber In A Box
- Simplex/Duplex

## USB & Panel Mount Series



- USB Type C Cables
- USB 3.0/2.0 Cables
- USB Adapters
- USB Lightning Charging Cables
- RJ45 w/ Panel Mount
- HD15 w/ Panel Mount
- DB9 w/ Panel Mount
- Audio 3.5mm

## Rapide II™ PCIe Riser / Interconnect SFF Gen5/6



- MCIO SFF-TA-1016 16i/8i/4i 124p/75p/38p
- Gen-Z SFF-TA-1002 4c+ 140p
- SlimSAS LP SFF-8654 8i/4i 74p/36p
- SlimSAS SFFF-8654 8i/4i 74p/36p
- MiniSAS HD SFF-8643 8i/4i
- PCIe Riser Cables
- Direct Attach PCIe

## Rapide II™ Series DAC/ACC/AOC/Transceiver



- 1.6T/800G/400G/200G/56G/25G/10G Loopback
- 1.6T/800G/400G OSFP/OSFP-RHS
- 800G/400G QSFPDD • 200G QSFP56
- 100G DSFP/SFPDD/QSFP28
- 50G SFP56 • 25G SFP28 • 10G SFP+

## GPU Power Cable Solutions 12V 2x6 H++



- GPU Cables for NVIDIA GeForce RTX 40/30 Series, H100/H200
- GPU Angled Y-Cables
- GPU Low Profile Cables
- GPU Mac Pro Cables
- GPU Premium/Standard Power Cables
- Pactech Universal GPU Power Test Kit

## Automotive & AI/Robotic Cable Products



## Pactech Industrial Smart Cables

